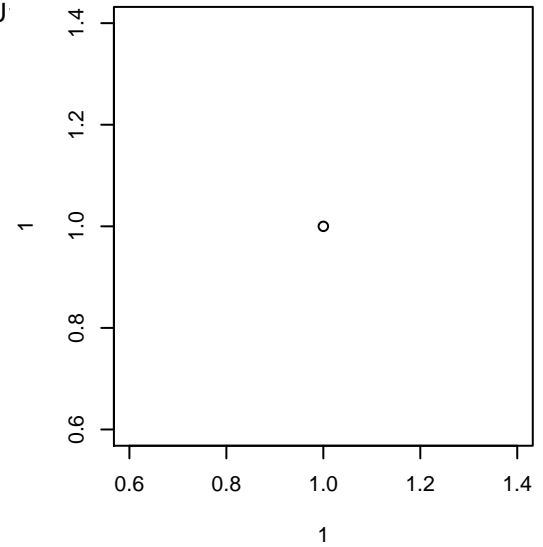


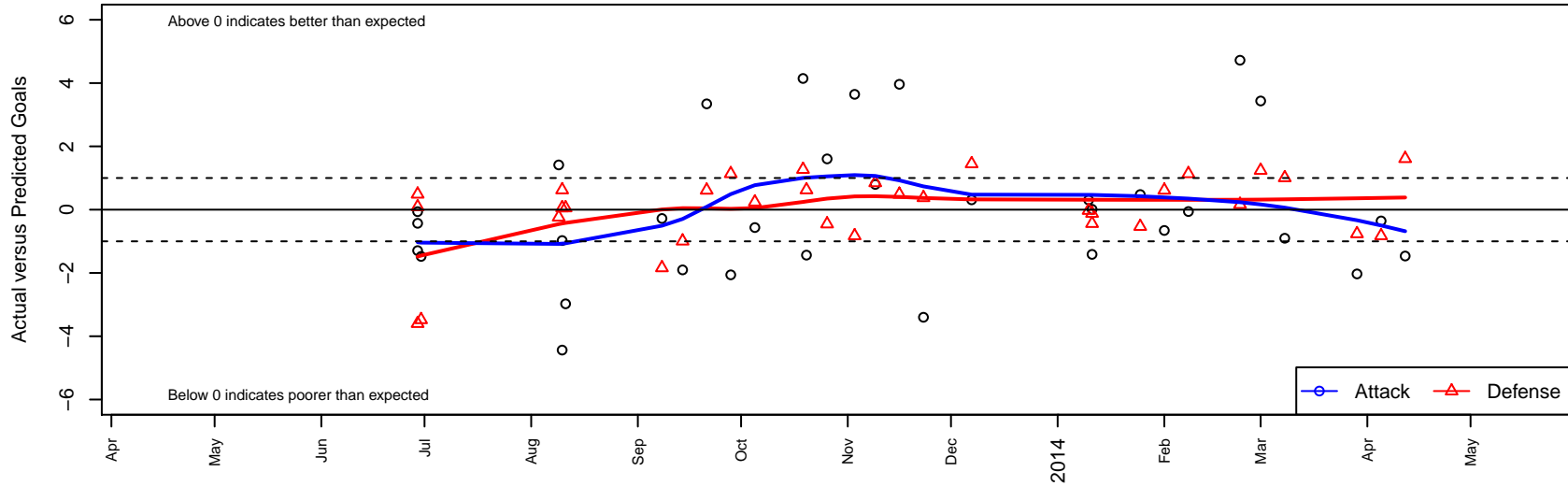
Blackhills FC Black B00

Blackhills FC
 Olympia, WA
 B00 total strength=914
 attack=2.3 defense=0.95
 fall league = RCL B00 Div 4, Spr RCL B00 Div 4
 alt names used:
 Blackhills FC Black B00
 Blackhills FC Black
 Blackhills FC B 00 Black
 Blackhills FC B 00 Black A

Venues played:
 Clash At the Border Platinum/Gold Pool Play U
 Clash At the Border Gold U13
 Blast Off BU13 B
 RCL B00 Div 4
 PacNW Winter Classic Premier II U13
 Spr RCL B00 Div 4
 Challenge Cup B00 Division 2 – Challenge 2



Blackhills FC Black B00
 Dots are actual minus expected GF (blue circles) and GA (red triangles).
 Blue line is smoothed change in attack strength. Red is smoothed change in defense strength.



| | date | home | | away | | venue | pred.home | pred.away |
|-------|------------|-------------------------------|----|--------------------------------|----|--|-----------|-----------|
| 26061 | 2014-04-12 | Eastside FC Blue B00 | 0 | Blackhills FC Black B00 | 1 | Challenge Cup B00 Division 2 – Challenge 2 | 1.61 | 2.47 |
| 25700 | 2014-04-05 | Blackhills FC Black B00 | 5 | SSC Shadow B B00 | 2 | Challenge Cup B00 Division 2 – Challenge 2 | 5.36 | 1.17 |
| 25462 | 2014-03-29 | Blackhills FC Black B00 | 1 | Washington Timbers Forrest B00 | 2 | Challenge Cup B00 Division 2 – Challenge 2 | 3.03 | 1.24 |
| 24050 | 2014-03-08 | Blackhills FC Black B00 | 3 | Snohomish United Red B00 | 0 | Spr RCL B00 Div 4 | 3.90 | 1.01 |
| 23539 | 2014-03-01 | 3 Rivers Yakima Gutierrez B00 | 0 | Blackhills FC Black B00 | 7 | Spr RCL B00 Div 4 | 1.24 | 3.57 |
| 23301 | 2014-02-23 | Blackhills FC Black B00 | 7 | WPFC Navy B00 | 2 | Spr RCL B00 Div 4 | 2.28 | 2.16 |
| 22312 | 2014-02-08 | Slammers Orange B00 | 1 | Blackhills FC Black B00 | 3 | Spr RCL B00 Div 4 | 2.14 | 3.06 |
| 22036 | 2014-02-01 | Blackhills FC Black B00 | 2 | Whatcom Rangers Blue B00 | 1 | Spr RCL B00 Div 4 | 2.66 | 1.61 |
| 21747 | 2014-01-25 | Harbor Premier Green B00 | 2 | Blackhills FC Black B00 | 3 | Spr RCL B00 Div 4 | 1.47 | 2.52 |
| 21150 | 2014-01-11 | Blackhills FC Black B00 | 2 | NWN Red B00 | 2 | PacNW Winter Classic Premier II U13 | 1.99 | 1.88 |
| 21154 | 2014-01-11 | PacNW Blue B00 | 2 | Blackhills FC Black B00 | 1 | PacNW Winter Classic Premier II U13 | 1.56 | 2.41 |
| 21057 | 2014-01-10 | Whatcom Rangers Gold B00 | 4 | Blackhills FC Black B00 | 1 | PacNW Winter Classic Premier II U13 | 3.97 | 0.69 |
| 20611 | 2013-12-07 | Eastside FC Grey B00 | 0 | Blackhills FC Black B00 | 6 | RCL B00 Div 4 | 1.45 | 5.69 |
| 19169 | 2013-11-23 | Blackhills FC Black B00 | 10 | Crossfire Premier D B00 | 0 | RCL B00 Div 4 | 13.40 | 0.38 |
| 18538 | 2013-11-16 | PacNW White B00 | 0 | Blackhills FC Black B00 | 10 | RCL B00 Div 4 | 0.48 | 6.04 |
| 17796 | 2013-11-09 | Blackhills FC Black B00 | 9 | FC Alliance C B00 | 0 | RCL B00 Div 4 | 8.20 | 0.85 |
| 17271 | 2013-11-03 | Blackhills FC Black B00 | 9 | SSC Shadow B B00 | 2 | RCL B00 Div 4 | 5.36 | 1.17 |
| 15967 | 2013-10-26 | BIFC Blue B00 | 4 | Blackhills FC Black B00 | 3 | RCL B00 Div 4 | 3.55 | 1.40 |
| 15358 | 2013-10-20 | FWFC White B00 | 0 | Blackhills FC Black B00 | 6 | RCL B00 Div 4 | 0.62 | 7.44 |
| 15028 | 2013-10-19 | Blackhills FC Black B00 | 9 | WA Rush Nero B00 | 0 | RCL B00 Div 4 | 4.85 | 1.27 |
| 12974 | 2013-10-05 | Blackhills FC Black B00 | 3 | 3 Rivers Yakima Gutierrez B00 | 1 | RCL B00 Div 4 | 3.57 | 1.24 |
| 12013 | 2013-09-28 | Slammers Orange B00 | 1 | Blackhills FC Black B00 | 1 | RCL B00 Div 4 | 2.14 | 3.06 |
| 11072 | 2013-09-21 | Blackhills FC Black B00 | 6 | Whatcom Rangers Blue B00 | 1 | RCL B00 Div 4 | 2.66 | 1.61 |
| 10104 | 2013-09-14 | Snohomish United Red B00 | 2 | Blackhills FC Black B00 | 2 | RCL B00 Div 4 | 1.01 | 3.90 |
| 9515 | 2013-09-08 | Blackhills FC Black B00 | 2 | WPFC Navy B00 | 4 | RCL B00 Div 4 | 2.28 | 2.16 |
| 6491 | 2013-08-11 | Blackhills FC Black B00 | 0 | FME Xtreme B00 | 1 | Blast Off BU13 B | 2.98 | 1.06 |
| 6178 | 2013-08-10 | Blackhills FC Black B00 | 2 | FME Xtreme B00 | 1 | Blast Off BU13 B | 2.98 | 1.06 |
| 6181 | 2013-08-10 | FWFC White B00 | 0 | Blackhills FC Black B00 | 3 | Blast Off BU13 B | 0.62 | 7.44 |

| | date | home | | away | | venue | pred.home | pred.away |
|------|-------------|------------------------------|---|-------------------------|---|---|------------------|------------------|
| 5915 | 2013-08-09 | Blackhills FC Black B00 | 6 | Kitsap Pumas 2 B00 | 1 | Blast Off BU13 B | 4.59 | 0.76 |
| 2453 | 2013-06-30 | Blackhills FC Black B00 | 0 | PCU Red B00 | 7 | Clash At the Border Gold U13 | 1.48 | 3.52 |
| 2278 | 2013-06-29 | WAFC Juventus B00 | 5 | Blackhills FC Black B00 | 1 | Clash At the Border Platinum/Gold Pool Play U13 | 5.09 | 1.43 |
| 2279 | 2013-06-29 | Blackhills FC Black B00 | 1 | NWSSA FC Beavers B00 | 5 | Clash At the Border Platinum/Gold Pool Play U13 | 1.06 | 5.49 |
| 2284 | 2013-06-29 | Washington Timbers Green B00 | 6 | Blackhills FC Black B00 | 1 | Clash At the Border Gold U13 | 2.40 | 2.29 |